

LE CALME

Caprice

Pour Guitare seule

Composé et Dédié à son Elève

Mlle Crabouillet

P A R

FERDINAND SOR

Prix : 4<sup>f</sup>. 50<sup>s</sup>

Opus. 50.

à PARIS, au Magasin de Musique de P. LUCIEN, Boulevard des Italiens, N° 11.  
et chez l'Auteur, Rue Favart, 335.

LE CALME.  
CAPRICE.  
Par  
Ferdinand SOR.

Andante.

The first staff of music features a treble clef and a key signature of two sharps (F# and C#). The melody is composed of eighth and sixteenth notes, with a dynamic marking of *mf* (mezzo-forte) appearing towards the end of the staff.

The second staff continues the melodic line with similar rhythmic patterns. A dynamic marking of *har.* (harmonica) is present above the staff, and a finger number '3' is written below the staff.

The third staff shows a continuation of the piece, with a mix of eighth and sixteenth notes and some rests.

The fourth staff contains more complex rhythmic figures, including sixteenth-note runs and slurs.

The fifth staff features a series of sixteenth-note passages and slurs, maintaining the melodic flow.

The sixth staff continues with intricate rhythmic patterns and slurs.

The seventh and final staff on the page concludes the musical phrase with a final cadence, including a fermata over the last note.

First musical staff, treble clef, key signature of two sharps (F# and C#), 7/8 time signature. It features a complex melodic line with many beamed eighth and sixteenth notes, and a bass line with chords and single notes.

Second musical staff, treble clef, key signature of two sharps, 7/8 time signature. Continues the melodic and harmonic development from the first staff.

Third musical staff, treble clef, key signature of two sharps, 7/8 time signature. Shows further melodic and harmonic progression.

Fourth musical staff, treble clef, key signature of two sharps, 7/8 time signature. Continues the intricate musical texture.

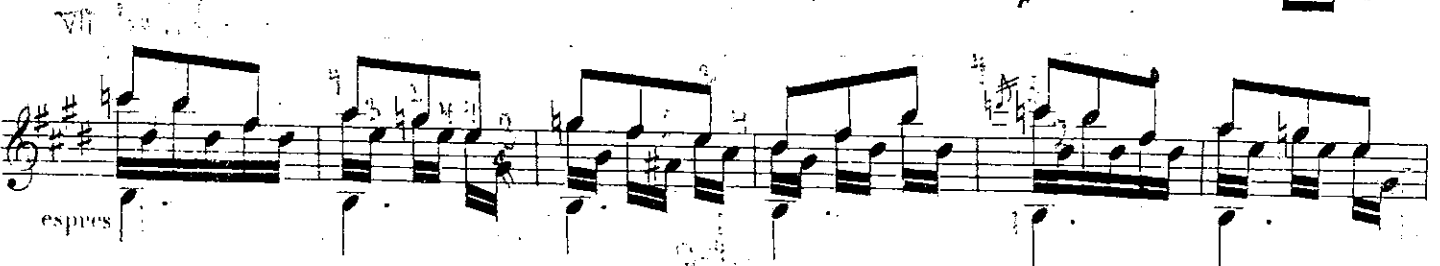
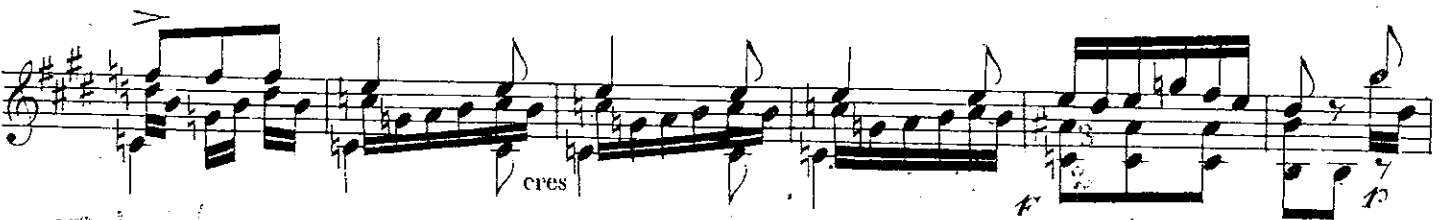
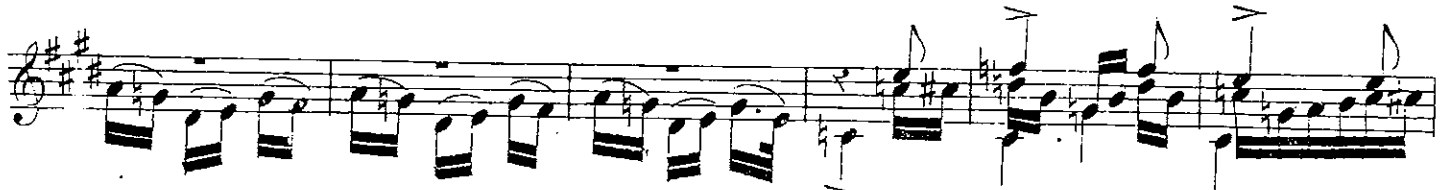
Fifth musical staff, treble clef, key signature of two sharps, 7/8 time signature. Features a mix of melodic runs and chordal accompaniment.

Sixth musical staff, treble clef, key signature of two sharps, 7/8 time signature. Includes some dynamic markings and articulation.

Seventh musical staff, treble clef, key signature of two sharps, 7/8 time signature. Ends with a long horizontal line under the bass staff, possibly indicating a continuation or a specific performance instruction.

A handwritten musical score consisting of seven staves of music. Each staff begins with a treble clef and a key signature of three sharps (F#, C#, G#). The music is written in a style characteristic of 18th or 19th-century manuscript notation, featuring a variety of note values including minims, crotchets, and quavers, as well as rests and slurs. The notation is dense and fills most of the staves. There are some small annotations, such as the number '7', scattered throughout the score.





Handwritten musical score on page 18, featuring eight staves of music in treble clef with a key signature of three sharps (F#, C#, G#). The score includes various musical notations such as eighth and sixteenth notes, rests, and dynamic markings like "har:" and "p". There are also handwritten annotations including "3/4", "2", and "1 2 3 4".