

Chème varié
suivi d'un Menuet

pour la

GUITARRE

Composé

par



F E R D . S O R .

Op: 3.

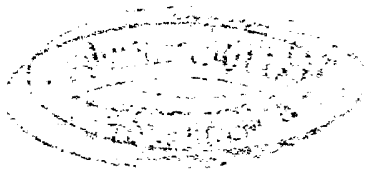
Prix 1 Fr:

Bonn et Cologne

1924
919.

chez N. SIMROCK.

2288.



Tema. Andante.

F: Sor
Op: 3.

Variazione
1.

Variazione
2.

Musical notation for the first system of Variazione 3, consisting of two staves with treble clefs and a key signature of one sharp (F#). The music features a complex rhythmic pattern with many beamed notes and rests.

Variazione
3.

Musical notation for the second system of Variazione 3, starting with a 2/4 time signature and a key signature of one sharp (F#). It continues the complex rhythmic pattern from the first system.

Musical notation for the third system of Variazione 3, continuing the complex rhythmic pattern.

Musical notation for the fourth system of Variazione 3, continuing the complex rhythmic pattern.

Musical notation for the fifth system of Variazione 3, continuing the complex rhythmic pattern.

Musical notation for the sixth system of Variazione 3, continuing the complex rhythmic pattern.

Variazione
4.

Musical notation for the first system of Variazione 4, starting with a 2/4 time signature and a key signature of one sharp (F#).

Musical notation for the second system of Variazione 4, continuing the complex rhythmic pattern.

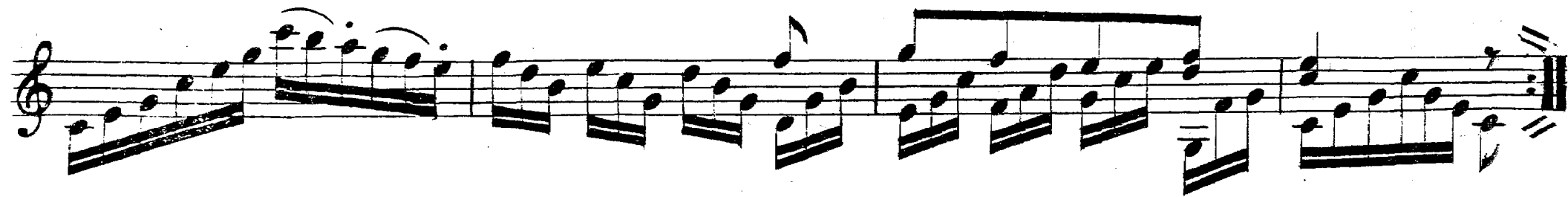
Musical notation for the third system of Variazione 4, continuing the complex rhythmic pattern.

Variazione
5.



Variazione
6.





Menuetto.

